



Performance Report for: <https://tavamsmaidam.lv/>

Report generated: Fri, Aug 25, 2023 4:32 PM +0300
 Test Server Location: London, UK
 Using: Chrome (Desktop) 103.0.5060.134, Lighthouse 9.6.4

A	Performance	Structure	L. Contentful Paint	T. Blocking Time	C. Layout Shift
	97%	94%	926ms	128ms	0.02

Top Issues

IMPACT	AUDIT	
Med	Avoid an excessive DOM size TBT	1,894 elements
Med	Use a Content Delivery Network (CDN)	71 resources found
Low	Eliminate render-blocking resources FCP LCP	Potential savings of 62ms
Low	Serve static assets with an efficient cache policy	Potential savings of 34.6KB
Low	Avoid enormous network payloads LCP	Total size was 874KB

Page Details



Total Page Size - 874KB



Total Page Requests - 80



HTML JS CSS IMG Video Font Other

How does this affect me?

Today's web user expects a fast and seamless website experience. Delivering that fast experience can result in increased visits, conversions and overall happiness.

As if you didn't need more incentive, **Google has announced that they are using page speed in their ranking algorithm.**

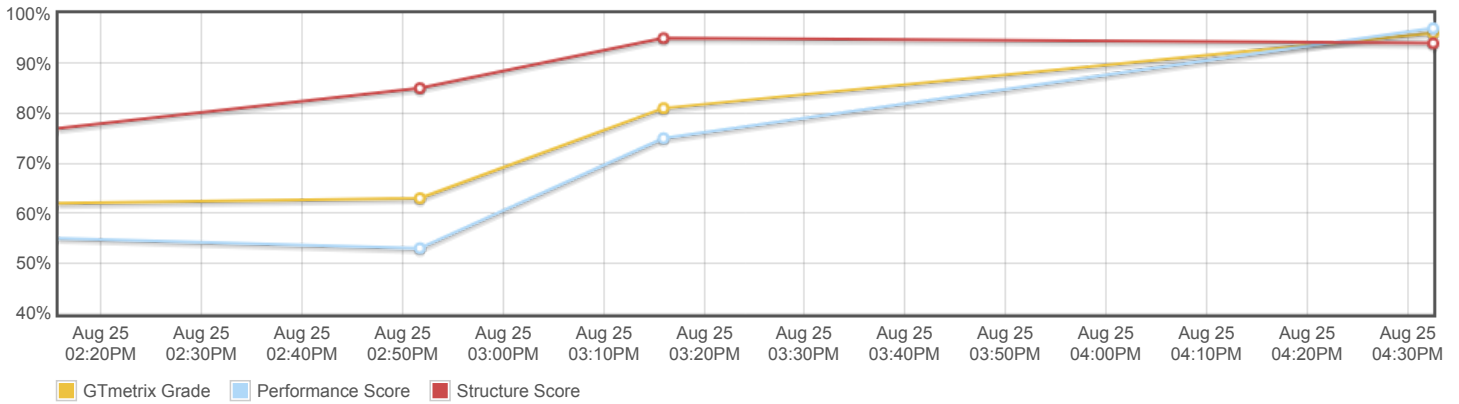
About GTmetrix



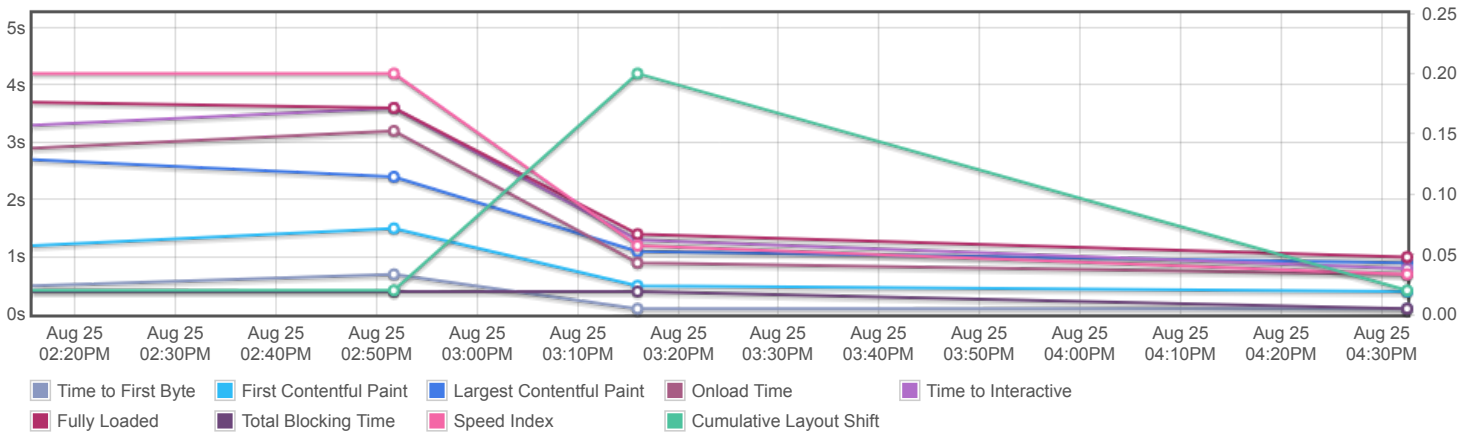
GTmetrix is developed by the good folks at **Carbon60**, a Canadian hosting company with over 27 years experience in web technology.

<https://carbon60.com/>

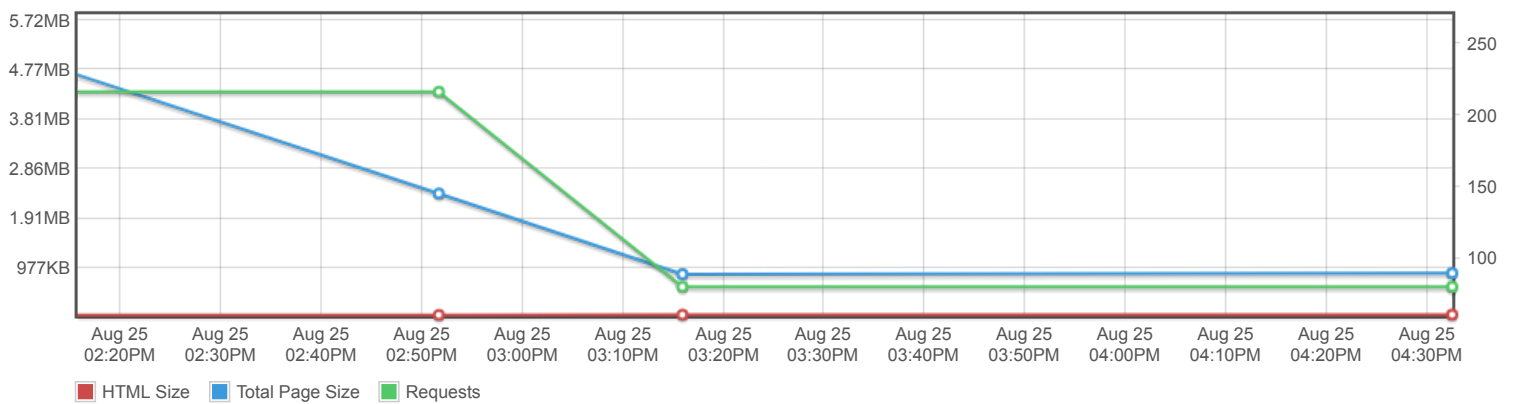
Page scores



Page metrics

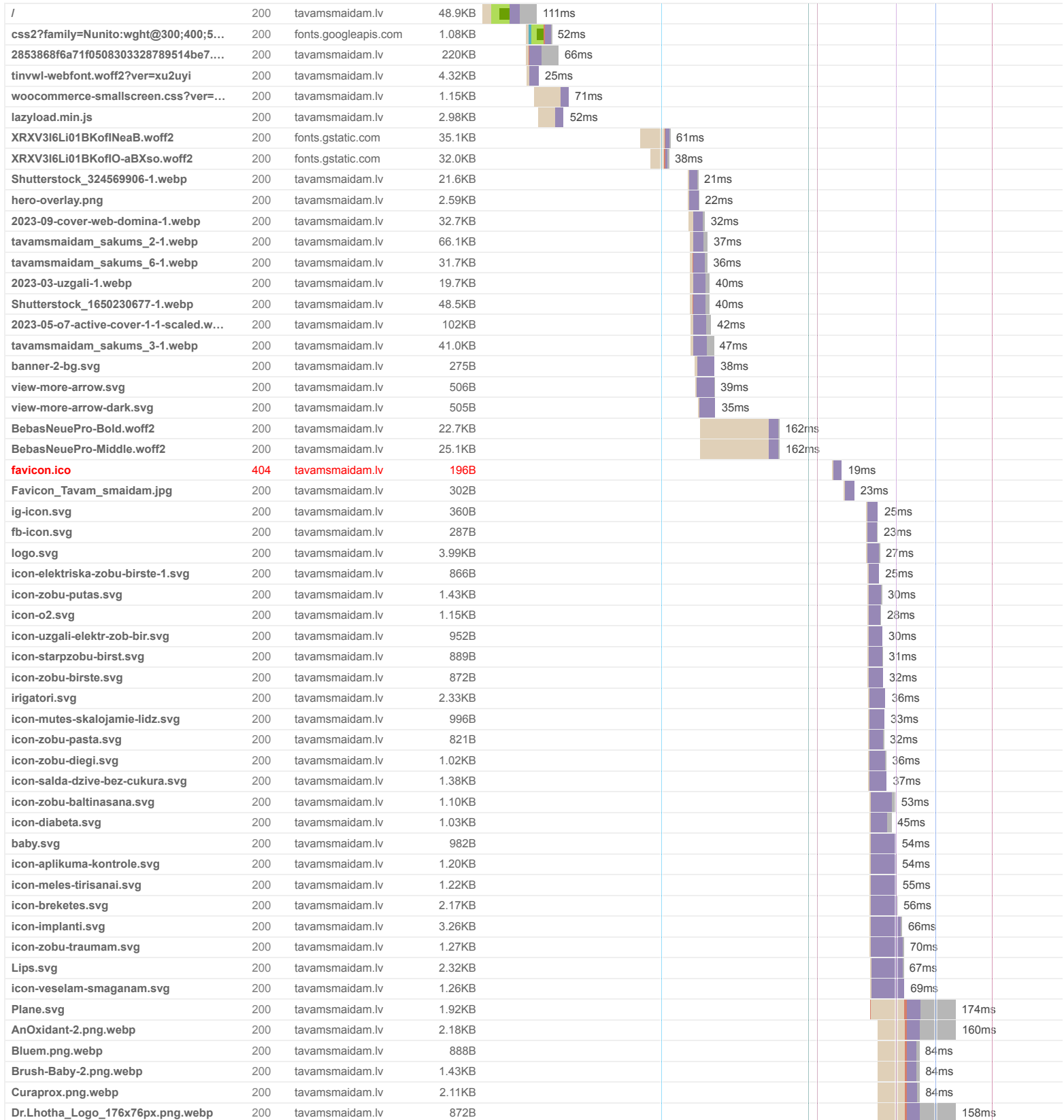


Page sizes and request counts



The waterfall chart displays the loading behaviour of your site in your selected browser. It can be used to discover simple issues such as 404's or more complex issues such as external resources blocking page rendering.

Superprodukti Tavam smaidam : TavamSmaidam.lv



elgydium.png.webp	200	tavamsmaidam.lv	2.17KB							158ms
Elmex.png.webp	200	tavamsmaidam.lv	1.90KB							158ms
eludril.png.webp	200	tavamsmaidam.lv	1.85KB							158ms
gc-europe-1.png.webp	200	tavamsmaidam.lv	1.56KB							156ms
Jordan.png.webp	200	tavamsmaidam.lv	1.53KB							156ms
Larident.jpg.webp	200	tavamsmaidam.lv	1.74KB							171ms
Lebon-1.png.webp	200	tavamsmaidam.lv	1.62KB							171ms
Listerine.png.webp	200	tavamsmaidam.lv	1.24KB							166ms
logo-marvis.png.webp	200	tavamsmaidam.lv	14.4KB							176ms
miradent.png.webp	200	tavamsmaidam.lv	2.71KB							177ms
MRC_StudyClub_176x76.png.webp	200	tavamsmaidam.lv	2.47KB							176ms
o7-active.png.webp	200	tavamsmaidam.lv	3.56KB							180ms
Opalescence.png.webp	200	tavamsmaidam.lv	2.19KB							179ms
oralb.png.webp	200	tavamsmaidam.lv	3.13KB							179ms
PHILIPS.png.webp	200	tavamsmaidam.lv	2.72KB							173ms
plackers.png.webp	200	tavamsmaidam.lv	1.96KB							173ms
RoyalDenta.png.webp	200	tavamsmaidam.lv	3.07KB							173ms
tepe-1.png.webp	200	tavamsmaidam.lv	2.20KB							177ms
TheHumble.png.webp	200	tavamsmaidam.lv	856B							177ms
whitewash.png.webp	200	tavamsmaidam.lv	4.90KB							175ms
woom.png.webp	200	tavamsmaidam.lv	1.44KB							175ms
zendium.png.webp	200	tavamsmaidam.lv	2.73KB							175ms
icon-search.svg	200	tavamsmaidam.lv	316B							209ms
icon-user.svg	200	tavamsmaidam.lv	411B							209ms
icon-wishlist.svg	200	tavamsmaidam.lv	470B							179ms
icon-cart.svg	200	tavamsmaidam.lv	573B							209ms
80 Requests	867KB (2.90MB Uncompressed)	Fully Loaded 1s (Onload 684ms)								



Performance Metrics

<p>First Contentful Paint</p> <p>How quickly content like text or images are painted onto your page. A good user experience is 0.9s or less.</p>	<p>Good - Nothing to do here</p> <p>365ms</p>	<p>Time to Interactive</p> <p>How long it takes for your page to become fully interactive. A good user experience is 2.5s or less.</p>	<p>Good - Nothing to do here</p> <p>843ms</p>
<p>Speed Index</p> <p>How quickly the contents of your page are visibly populated. A good user experience is 1.3s or less.</p>	<p>Good - Nothing to do here</p> <p>727ms</p>	<p>Total Blocking Time</p> <p>How much time is blocked by scripts during your page loading process. A good user experience is 150ms or less.</p>	<p>Good - Nothing to do here</p> <p>128ms</p>
<p>Largest Contentful Paint</p> <p>How long it takes for the largest element of content (e.g. a hero image) to be painted on your page. A good user experience is 1.2s or less.</p>	<p>Good - Nothing to do here</p> <p>926ms</p>	<p>Cumulative Layout Shift</p> <p>How much your page's layout shifts as it loads. A good user experience is a score of 0.1 or less.</p>	<p>Good - Nothing to do here</p> <p>0.02</p>

Browser Timings

Redirect	0ms	Connect	56ms	Backend	21ms
TTFB	77ms	First Paint	365ms	DOM Int.	665ms
DOM Loaded	667ms	Onload	684ms	Fully Loaded	1.0s

IMPACT	AUDIT	
Med	Avoid an excessive DOM size <small>TBT</small>	1,894 elements
Med	Use a Content Delivery Network (CDN)	71 resources found
Low	Eliminate render-blocking resources <small>FCP LCP</small>	Potential savings of 62ms
Low	Serve static assets with an efficient cache policy	Potential savings of 34.6KB
Low	Avoid enormous network payloads <small>LCP</small>	Total size was 874KB
Low	Properly size images	Potential savings of 18.9KB
Low	Avoid long main-thread tasks <small>TBT</small>	5 long tasks found
Low	Reduce JavaScript execution time <small>TBT</small>	245ms spent executing JavaScript
Low	Reduce unused CSS <small>FCP LCP</small>	Potential savings of 215KB
Low	Defer offscreen images	Potential savings of 342KB
Low	Avoid chaining critical requests <small>FCP LCP</small>	2 chains found
N/A	Largest Contentful Paint element <small>LCP</small>	1 element found
N/A	Reduce initial server response time <small>FCP LCP</small>	Root document took 21ms
N/A	Avoid large layout shifts <small>CLS</small>	5 elements found
N/A	Minimize main-thread work <small>TBT</small>	Main-thread busy for 1.0s
N/A	Reduce the impact of third-party code <small>TBT</small>	Total size was 68.8KB
N/A	User Timing marks and measures	